

MASI68 I/O MODULE

4 digital inputs, 4 digital outputs

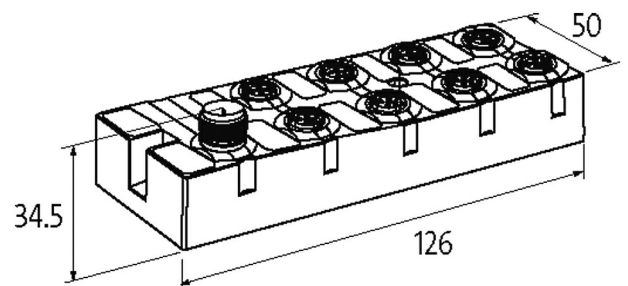
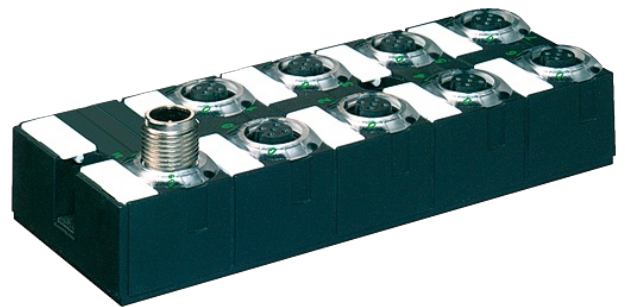
Compact module

DI4 - 0.19 A DO4 - 2 A (C) - 8× M12 (Y)

Y-wiring

Connection cables are in the online shop under "Connection Technology".

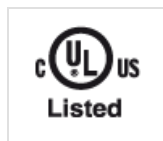
Housing fully potted.

Illustration

Product may differ from Image

Approvals

Power 24V

**Input**

Sensor supply US	max. 190 mA from AS-Interface (short-circuit and overload protected)
Type	for 3-wire sensors or mechanical switches, PNP
M12 configuration	Y-wiring

Output

Switching current per output	max. 2 A (short-circuit and overload protected)
Total current	max. 4 A

Connections

Fieldbus	A-coded
I/O ports	M12, 5-pole

General data

Protection	IP68
Mounting method	screw fixing

Temperature range	-20...+60 °C (storage temperature -20...+70 °C)
-------------------	---

Dimensions H×W×D	126×50×34.5 mm
------------------	----------------

Technical Data

Bus voltage (AS-Interface)	26.5...31.6 V DC
----------------------------	------------------

ASI-Power 24	yes
--------------	-----

Total current	max. 250 mA
---------------	-------------

Addressing	via master or M12 connection and programming device
------------	---

Address range	1...31
---------------	--------

Profile (IO/ID/ID2 code)	S-7.F.E
--------------------------	---------

Diagnostic

Communication status	via LED
----------------------	---------

Diagnostic via LED	per module
--------------------	------------

Monitoring - no voltage	yes
-------------------------	-----

Commercial data

country of origin	DE
-------------------	----

customs tariff number	85176200
-----------------------	----------

EAN	4048879048927
-----	---------------

eClass	27242604
--------	----------

Packaging unit	1
----------------	---